

**Non Substantial Amendments to the Anne Arundel County
Consolidated Plan: FY 2011 – FY 2015
Adopted July 12, 2011**

1. The third full paragraph on page 33, *Chapter Two: Market Analysis*, should be removed and replaced with the following paragraph.

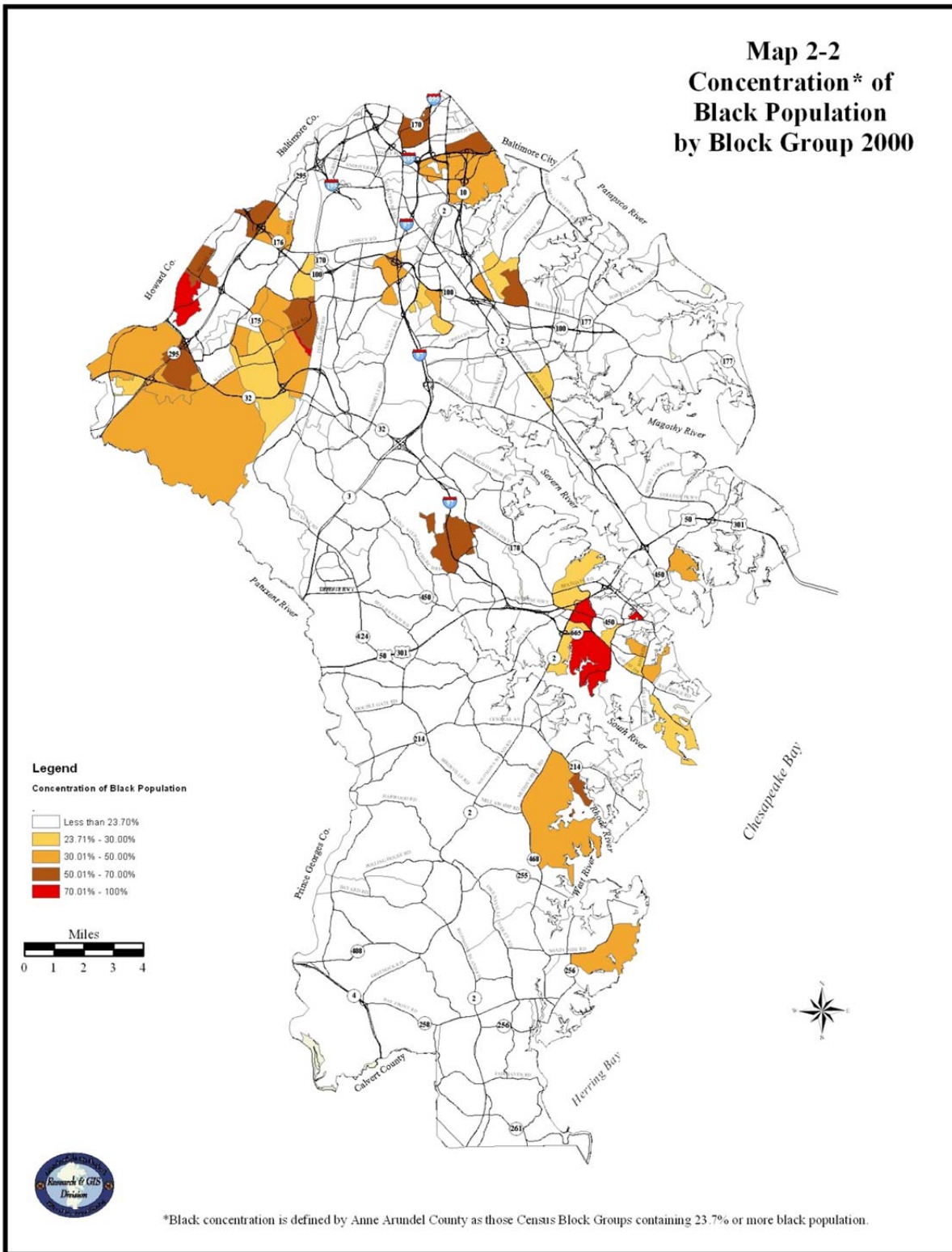
“Anne Arundel County defines a racial or ethnic minority concentration as geographical areas where the percentage of a specific minority or ethnic group is 10 percentage points higher than the County overall. According to the 2000 Census, Blacks comprised 13.7 percent of the County’s population as a whole. Therefore, a concentration of this minority group would be considered any block group comprised of 23.7 percent or more Black population. Map 2-2 shows the concentration of the Black population throughout the County. It should be noted, however, that areas of Black concentration on this map include the Jessup State Prison (located to the Northwest of the intersection of I-295 and MD Route 175 in the Western part of the County), Crownsville State Hospital (located in the center of the County along I-97), and the Ft. Meade military base (located to the north of Route 32 and to the Southwest of MD Route 175 in the Western part of the County). An analysis of other racial and ethnic minorities was conducted, and at the time of the 2000 Census, no other minority groups met the County’s definition of minority concentration. Nevertheless, we have also included Map 2-3, which shows the Hispanic population by Block Group to indicate where our growing Hispanic population resides, as we expect that with the new 2010 Census data some block groups will meet the County’s definition of minority concentration for Hispanics.”

2. Page 42, *Chapter Two: Market Analysis*, replace Map 2-2 with the attached map, “Concentration of Black Population by Block Group 2000.”

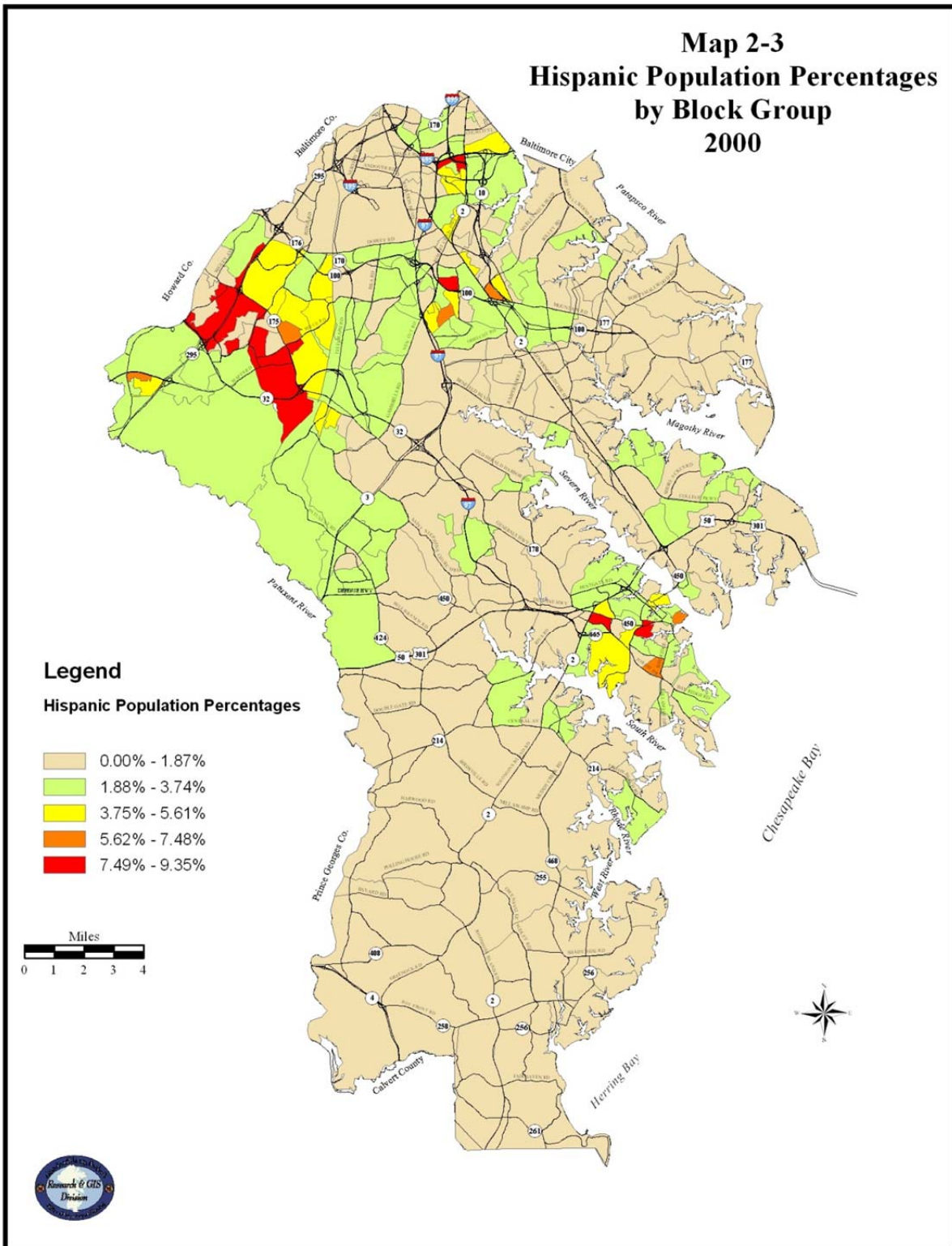
3. Page 53, *Chapter Two: Market Analysis*, replace Map 2-3 with the attached map, “Concentration of Hispanic Population by Block Group 2000.”

4. Page 9, *Anne Arundel County Fair Housing Plan*, replace Map FHP-1 with the attached map, “Concentration of Minority Population(s) and Low to Moderate Income Block Groups 2000.”

**Map 2-2
 Concentration* of
 Black Population
 by Block Group 2000**



**Map 2-3
Hispanic Population Percentages
by Block Group
2000**



Map FHP-1 Concentration of Minority Population(s) and Low to Moderate Income Block Groups 2000

